

Bentley® Navigator V8i

Dynamic Collaboration for Iterative Project Review

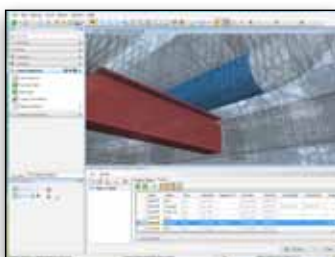
Bentley Navigator V8i is used by infrastructure teams to review and analyze project information. With highly versatile viewing capabilities, Bentley Navigator V8i delivers a more intuitive user experience and improves the interactive quality of information. Users can analyze projects virtually – to detect and resolve clashes and simulate project schedules. They can also augment data by registering comments in the file, and produce 2D and 3D PDFs to share project information with a wider audience.



Explore models intuitively



Filter and section views interactively



Detect and resolve clashes

View

Bentley Navigator V8i viewing capabilities reduce software costs, deliver a more intuitive user experience, and improve the interactive quality of information.

- Open various file types with one software product to integrate 2D/3D models and support multiple review workflows. With support for both i-models and native files, users can reduce software costs, save time, and improve the quality of their design review workflows.
- Explore the models naturally and intuitively with enhanced tools to improve the quality of the user experience. Move around easily with capabilities that allow users to walk, fly, pan, rotate, and view the model close-up with zoom in/out functionality.
- Manipulate and customize the display and filter of geometry to improve visual clarity. Save and recall pre-defined view attributes to make navigation easier. Use dynamic view capabilities to slice, filter, and section models to visualize the model interactively.

Analyze

Using Bentley Navigator V8i, teams improve project insight and make more reliable decisions, reduce risk, and avoid costly on-site errors.

- Find the information behind the geometry to quickly leverage business intelligence. Effectively locate components based on key attributes in information rich i-models to save time, improve quality, and advance project insight.
- Measure distances, areas, angles, and volumes with complete engineering precision. Because Bentley Navigator V8i does not need to compromise accuracy in favor of performance, all information viewed is faithfully preserved from the original source.

- Simulate and resolve clashes before construction starts to avoid costly errors on-site. Simulate schedules to eliminate the need for guesswork during project planning. Together, these capabilities reduce exposure to risk, save costs, and improve the quality of decisions made.

Augment

- Enhance and assess project information to streamline team communication, improve information visibility, and increase the value of extended review cycles.
- Group and classify items to build more intelligence into the model by adding attributes that greatly improve the quality of the information on screen. Create relationship sets to categorize items, enhance project insight, and make more informed decisions.

Bentley Navigator delivers a more intuitive user experience, and improves the interactive quality of information.

- Mark up and enhance the model with new geometry to quickly assess the impact of change without modifying the original engineering data. Register and preserve comments using a structured approach, and interpret comment status through a complete audit trail.
- Produce models in PDF format to broaden accessibility and save time. Visually communicate designs via Luxology rendering to improve the quality of decision making. Simulate construction sequences through animation to improve the planning process, and overcome scheduling risks.

System Requirements

Processor

Intel Pentium or AMD Athlon

Operating System

Windows 7, Windows 7 x64, Windows Vista, Windows Vista x64, Windows XP Professional, Windows XP Professional x64, Windows XP Home Edition, Windows 2000 Professional, Windows 2000 Server, Windows Server 2003, Windows Server 2003 x64

RAM

512 MB minimum memory, 2 GB or more recommended

Hard disk

900MB minimum free disk space

Find out about Bentley at:
www.bentley.com

Contact Bentley

1-800-BENTLEY (1-800-236-8539)
Outside the US +1 610-458-5000

Global Office Listings

www.bentley.com/contact



Bentley Navigator V8i At-A-Glance

Open

- View i-models, native files, and DGN files with one software product
- Aggregate 2D/3D multi discipline models
- Directly open AutoCAD DWGs with RealDWG support
- Display data from AutoCAD applications with object enabler support
- View large image files and multi page PDFs
- View, reference, and geo-coordinate models
- View and manipulate point cloud data

Explore

- Navigate models intuitively with enhanced viewing capabilities
- Walk, fly, pan, and rotate to move around the model naturally
- View the model up close with zoom-in/out capability
- Group tools and tasks with simplified and customizable interface
- Utilize intelligent and interactive snapping
- Speed productivity with keyboard position mapping

Manipulate

- Customize the display to filter geometry from view
- Save and recall pre-defined view attributes
- Slice and filter 3D models for improved interactive visualization
- Section models using dynamic view capabilities
- Attach large image files as reference files
- Set and change view perspectives with enhanced camera settings

Find

- Display and navigate business information behind the geometry
- Search for elements based on key attributes
- Locate information contained in i-models
- Find and access element information quickly
- Look for various materials, PDF references, and simple geometry
- Isolate key components with customizable search capability

Measure

- Accurately measure distances and angles
- Estimate areas and volumes with complete reliability
- Compare two pieces of geometry with complete engineering precision
- Determine clearance constraints for effective planning
- Properly size doorways and openings to improve design

Simulate

- Detect clashes on native content from many sources without translation ^A
- Create and apply powerful suppression rules to reduce false results ^A
- Manage and resolve clash results effectively ^A
- Import project schedule information to simulate project planning ^B
- Review multiple schedule scenarios simultaneously ^B
- Animate objects based on schedule tasks or construction status
- Automate linking of schedule data ^B

Group

- Create item relationships to build more intelligence into the model
- Batch import for item sets
- Group and categorize data to alter the display view
- Assign attributes to items and classify geometry
- Color code the model and group objects according to construction status
- Organize elements by discipline or specific contractor

Mark up

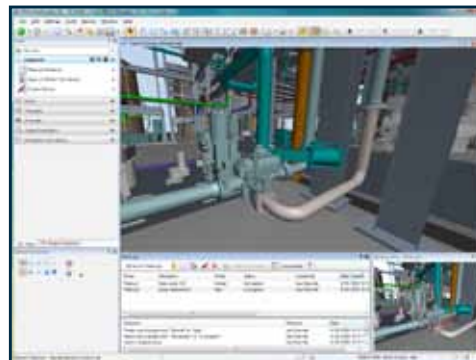
- Review and mark up designs with redline comments
- Manage markups and review workflows with markup dialog
- Register and preserve comments against items
- Assign unique attributes and comment history to individual markups
- Add simple graphics to enhance “what if” scenarios and assess impact

Produce

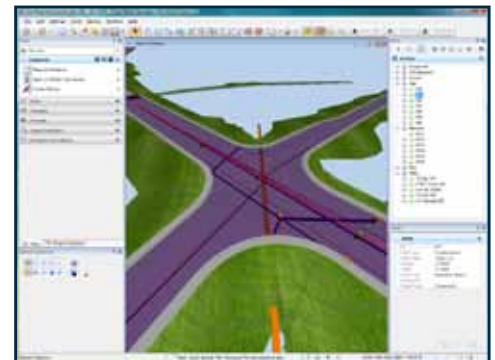
- Near real-time photo realistic Luxology rendering
- Generate paper prints of models and markups to scale
- Publish PDF report of markups
- Create and support 2D/3D multi page PDF files
- Google Earth integration
- Create and reference geospatial PDFs

^A ProjectWise Clash Resolution Visa license required

^B ProjectWise Schedule Simulation Visa license required



Mark up and register comments



Leverage item intelligence in the model